



## „Geo For All“ - neue Technologien für eine Welt im Wandel

**Pirmin Kalberer**  
**Sourcepole AG, Zürich**  
**[www.sourcepole.ch](http://www.sourcepole.ch)**



# Open Data



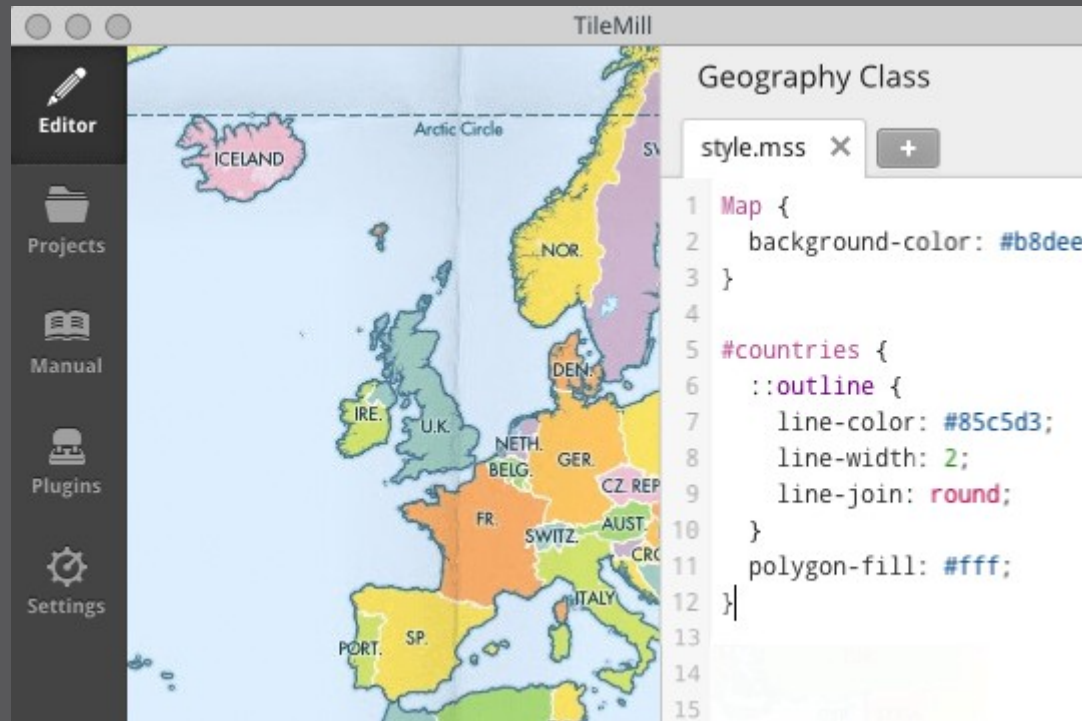
# OpenStreetMap

The screenshot shows the OpenStreetMap web editor interface. The browser address bar displays the URL: `www.openstreetmap.org/edit?editor=id&lat=40.7038&lon=-74.01348&zoom=16`. The interface includes a top navigation bar with 'View', 'Edit', 'History', and 'Export' tabs. A user profile 'Harry Wood' is visible with links for 'home', 'inbox', and 'logout'. The main map area shows a street grid with labels such as 'West Street', 'New Street', 'Beaver Street', and 'FDR Drive'. A toolbar on the left offers 'Point', 'Line', and 'Area' editing tools. On the right, a panel titled 'Editing Primary Road' is open, showing a road icon and a list of attributes for 'State Street':

- Name: State Street
- One Way:  no
- Structure:  Bridge,  Tunnel,  Embankment,  Cutting,  Remove
- Access: (partially visible)

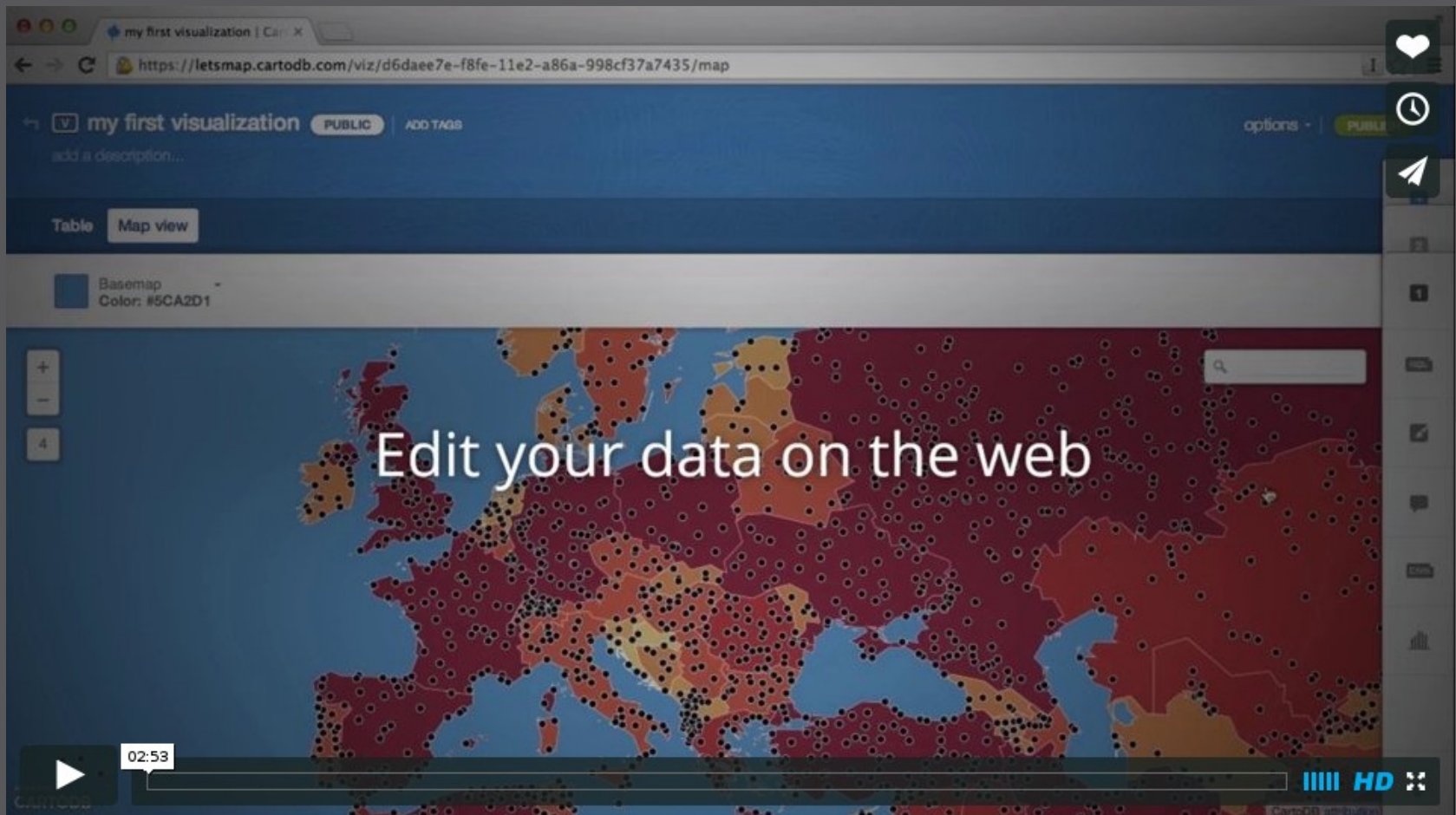
At the bottom of the editing panel, it states 'Contributed by robgeb, aude, JessAk71, and 85 others' with a 'report a bug' link and the version number '1.0.0'. The map image is credited to 'bing' and 'Image courtesy of USGS, © 2013 Microsoft Corporation'.

# **Demokratisierung der Kartenerstellung**



- <http://youtu.be/NPmchoEQFXs>
- <http://tilemill.com/>
  - <https://github.com/mapbox/tilemill>
- <http://live.osgeo.org/>

# **Webbasierte Kartenerstellung**



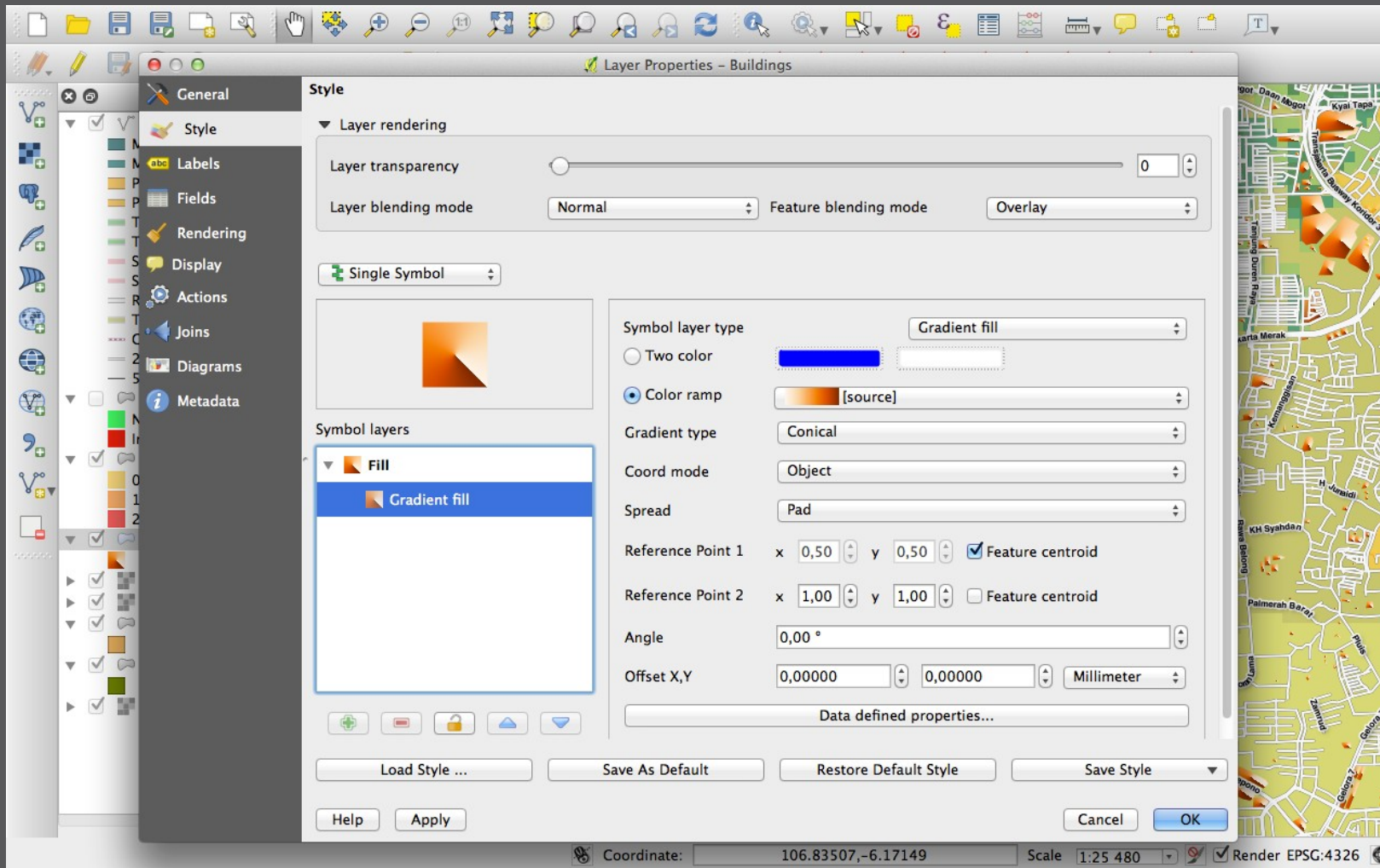
➤ <http://vimeo.com/72048069>

➤ <http://cartodb.com/>

➤ <https://github.com/CartoDB/cartodb>

# **Desktop-GIS Revival**





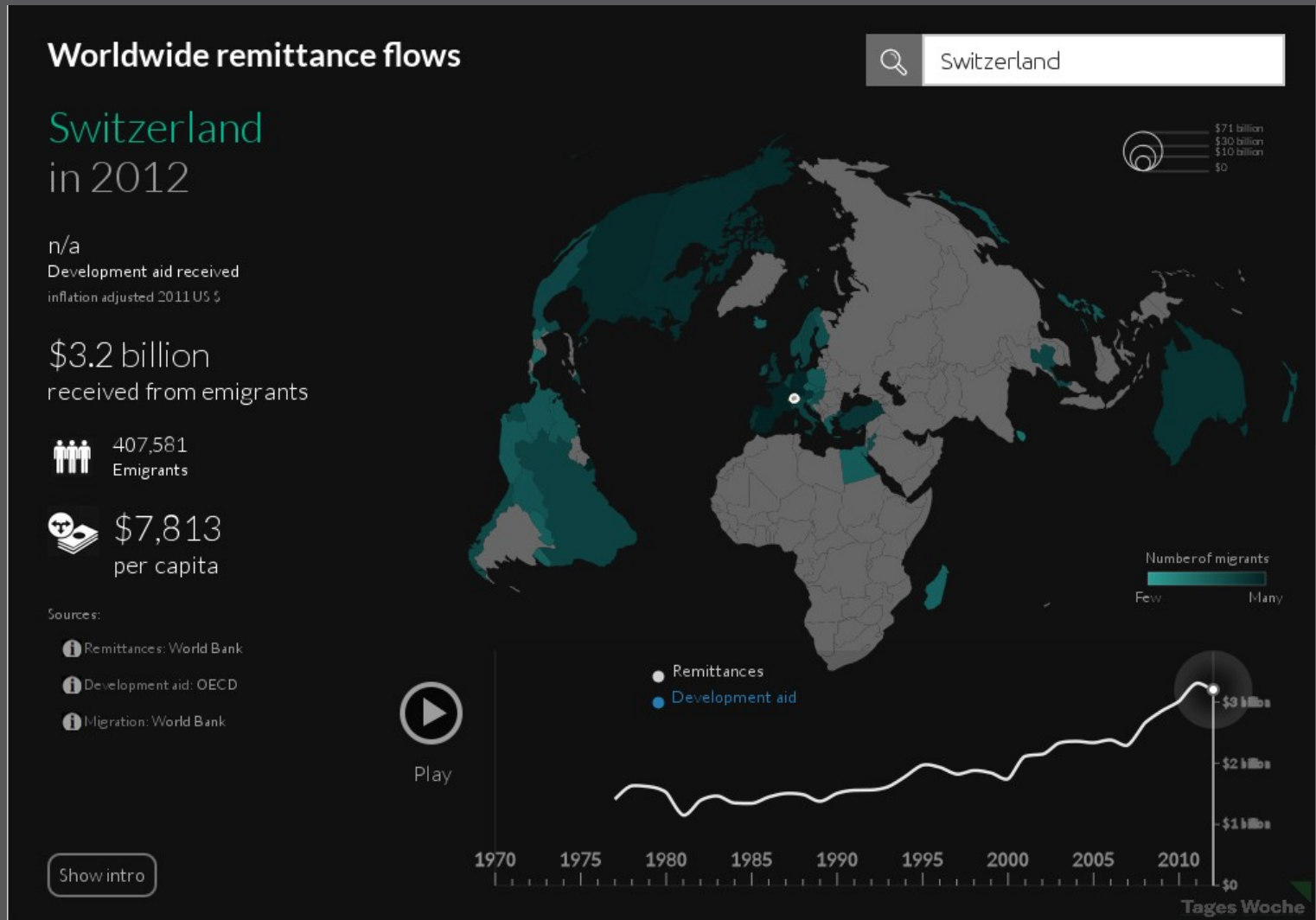
<http://qgis.org/>



The screenshot shows the QGIS Cloud website interface. At the top left is the QGIS Cloud logo. On the right, there are links for 'Dokumentation' and 'Abos'. The main content area features a QGIS desktop application window. The window's 'Layer' panel on the left lists various layers such as 'Andere', 'Bergriesel.aem', 'Eislaufen', 'Freizeit', 'Hilfpe', 'Helskang', 'Kassa', 'Kinderland', 'Parkmöglichkeit', 'Rennstroeck', 'Rodelbahn', 'Skischule', 'Speed Check', 'Webcam', 'Skiliste u. Skiroute', 'Seilbahnhaxe', and 'Google Satellite'. The main map area displays a satellite view of a mountainous region with yellow dashed lines and various colored markers. A large white text overlay '5. Publish Map' is centered on the map. Below the map, there is a 'QGIS Cloud' panel with 'Services', 'Load Data', and 'Account' tabs, and a 'Publish Map' button. At the bottom of the website, there is a section titled 'Aktuelle Karten' with several map thumbnails.

<http://qgiscloud.com/>

# **Javascript / SVG**

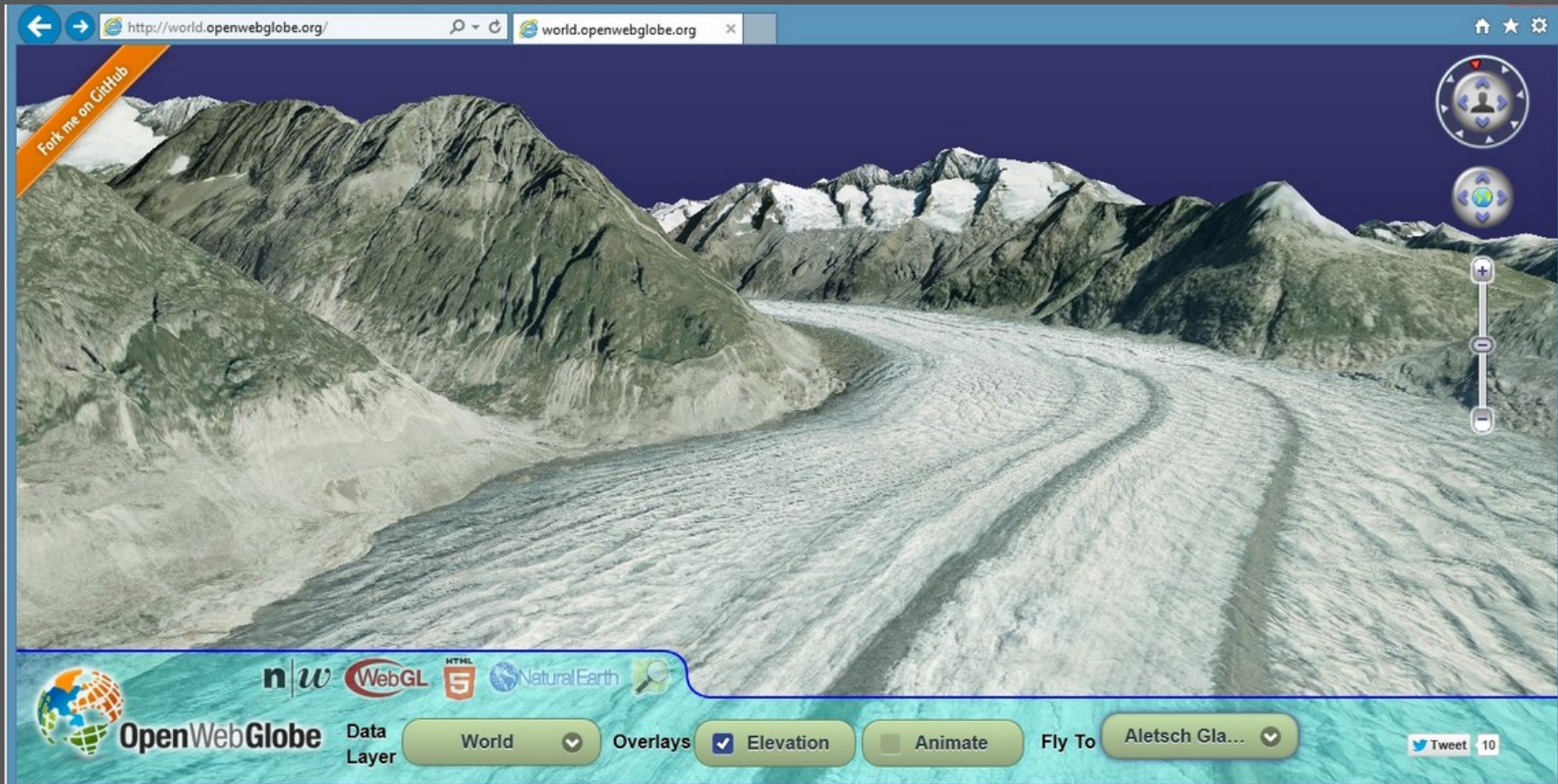


<http://d3js.org/>

# WebGL / 3D



# WebGL / HTML 5



- <http://get.webgl.org/>
- <http://www.openwebglobe.org>
- <http://cesiumjs.org/>



# Geo for All

- › Initiative von ICA und OSGeo (Sept. 2011)
- › Förderung von Open source, Open standards, und Open data in der GIS-Ausbildung
- › Heute 78 ICA-OSGeo Labs weltweit
- › >100 Labs in Sept. 2014
- › <http://www.geoforall.org/>





## Danke!



@PirminKalberer